



# DUPAGE COUNTY

## 2026 CAPITAL IMPROVEMENT PLAN



421 N. County Farm Road, Wheaton IL 60187  
(630) 407-6023 • [www.dupagecounty.gov](http://www.dupagecounty.gov)



# THE COUNTY OF DUPAGE

## CAPITAL IMPROVEMENT PLAN

Transportation .....	2
Flood Control .....	7
Water & Sewer .....	11
Environmental .....	16
County Infrastructure .....	18

*a great place to live, work and raise a family*



# THE COUNTY OF DUPAGE TRANSPORTATION

91st Street Sidewalk and Lighting .....	3
College Road at Maple Avenue Intersection Improvements.....	4
County Farm Road at Geneva Road Intersection Improvements.....	5
Stearns Road Multiuse Path .....	6

421 N County Farm Road, Wheaton IL 60187 Tel 630-407-6900

*a great place to live, work and raise a family*

City of Wheaton



# 91ST STREET — CLARENDON HILLS ROAD TO IL83 SIDEWALK AND LIGHTING IMPROVEMENT

## PROJECT DETAILS

### LOCATION

Unincorporated DuPage County

### ISSUE

Insufficient pedestrian accommodations

### SOLUTION

Construct a new sidewalk with pedestrian lighting for safe access to Elementary school

### BENEFIT

Eliminates need for people to walk in street, provides safe crossings.

### COST ESTIMATE

\$2,500,000 (project is partially funded through Safe Routes to School grant)

### DISTRICTS REPRESENTED

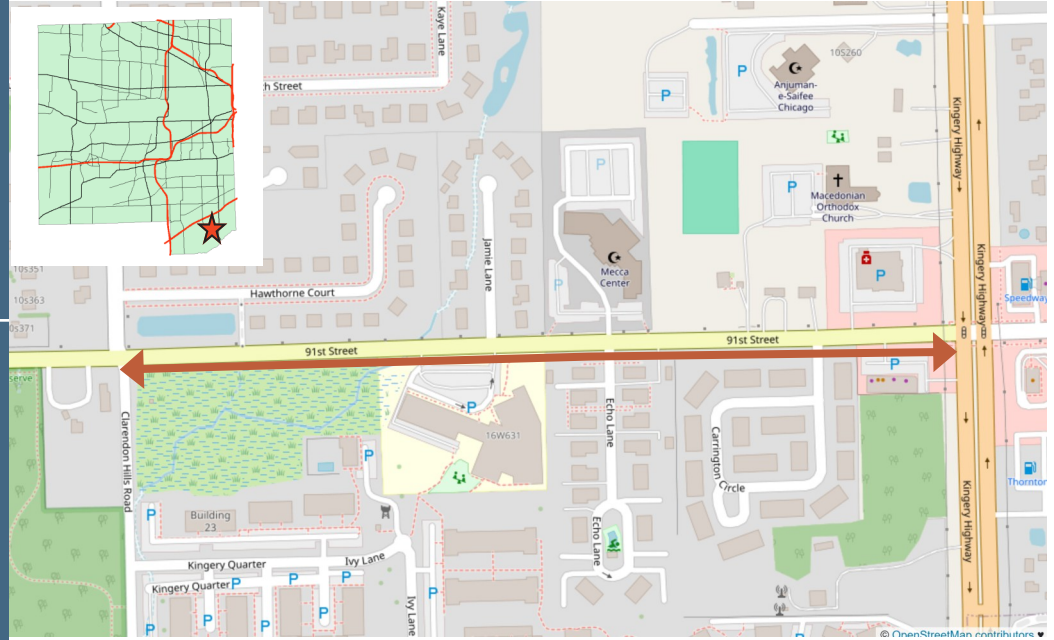
US Senate—Illinois

US Representative Districts: 6 & 11

IL Senate District 41

IL Representative District 82

County Board District 3



## PROJECT INFORMATION

This project stems from an economic development and transportation needs study conducted in 2020 and 2021. The 91st Street corridor is adjacent to an underserved community whose residents use the roadway to access Anne M. Jeans school. Presently, residents, including school children, must walk on the 91st Street shoulders due to the lack of sidewalk. 91st Street is a narrow township-maintained major collector roadway with no lighting.

DuPage County applied for, and was awarded, a Safe Routes to School grant and has begun phase I engineering in coordination with the Downers Grove Township Highway Department. The project is

operating under an accelerated timeline with the hopes of designing the sidewalk and lighting in 2026 and constructing the project in 2027.

The project will involve improving pedestrian crossings at IL 83 and at Clarendon Hills Road and constructing sidewalk along the north and south sides of the road as feasible. Pedestrian lighting systems will accompany the sidewalk improvement in the right of way.



# COLLEGE ROAD AT MAPLE AVENUE INTERSECTION: CHANNELIZATION AND SAFETY IMPROVEMENTS

## PROJECT DETAILS

### LOCATION

Village of Lisle

### ISSUE

Traffic congestion and pedestrian safety

### SOLUTION

Propose turn lane improvements and enhanced pedestrian crossing management

### BENEFIT

Pedestrian safety, reduction of vulnerable user injuries, traffic delay reduction

### COST ESTIMATE

\$3,000,000 including engineering and construction

### DISTRICTS REPRESENTED

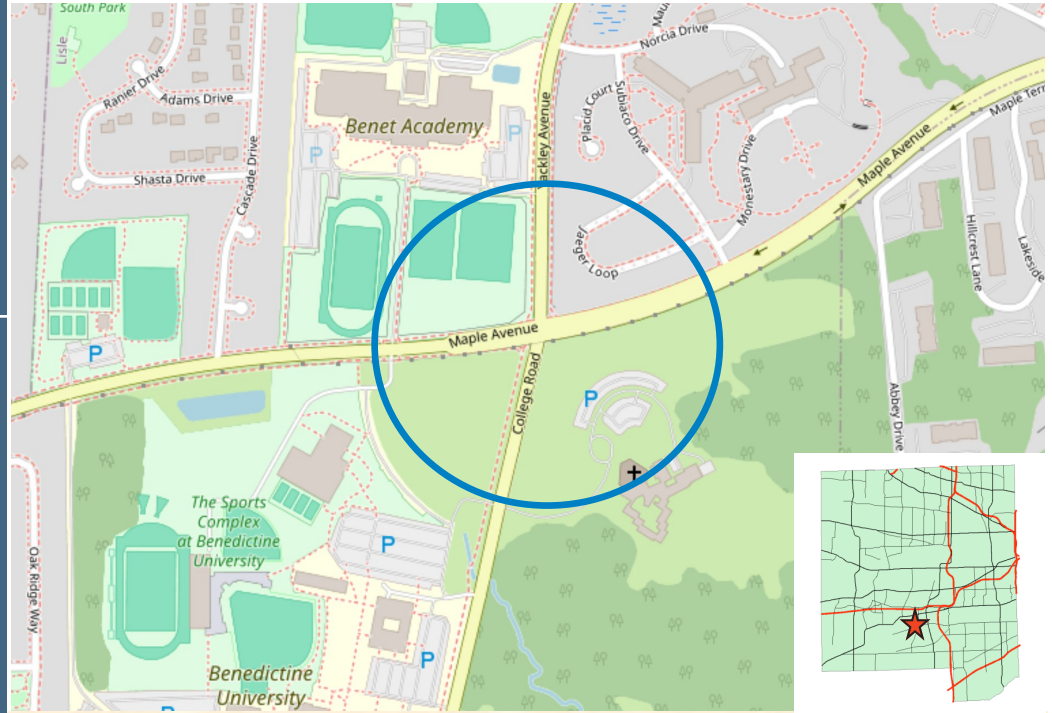
US Senate—Illinois

US Representative Districts: 6 & 11

IL Senate Districts: 21 & 41

IL Representative Districts: 42 & 81

County Board Districts: 2 & 5



## PROJECT INFORMATION

The project will involve construction of additional turn lanes at one of the most congested intersections in south-central DuPage County. The project will also re-align the north-south lanes, add new, modernized, traffic signals, complete the signal systems for both corridors, and improved pedestrian access at all intersection quadrants to be compliant with Americans with Disabilities Act (ADA) requirements and consistent with DuPage regional trail plans.

College Road and Maple Avenue are both minor arterials that convey more than 20,000 vehicles per day to the I-88 Tech Corridor and the I-355 Veterans Tollway. The intersection handles more than 42,000 vehicles per day and is listed as a location with severe injury crash experience that can be mitigated through strategic intersection geometric and signal improvements. The

intersection is immediately adjacent to a large high school and Benedictine University as well as a large senior housing development. With a high number of pedestrians and multiple age groups using the intersection, it is important to make this safe for motorists as well as vulnerable users.

Estimated project cost—including engineering—for the intersection improvements is currently valued at more than \$3.0 million.

Phase I engineering is currently underway and DuPage County anticipates completing the Phase I report in 2026 and progressing to design engineering and land acquisition in 2026 and 2027. The County hopes to construct the improvements in late 2027 and early 2028.



## PROJECT DETAILS

### LOCATION

Unincorporated DuPage County and Village of Winfield

### ISSUE

Traffic congestion and pedestrian safety

### SOLUTION

Propose turn lane improvements and enhanced pedestrian crossing management

### BENEFIT

Pedestrian safety, reduction of vulnerable user injuries

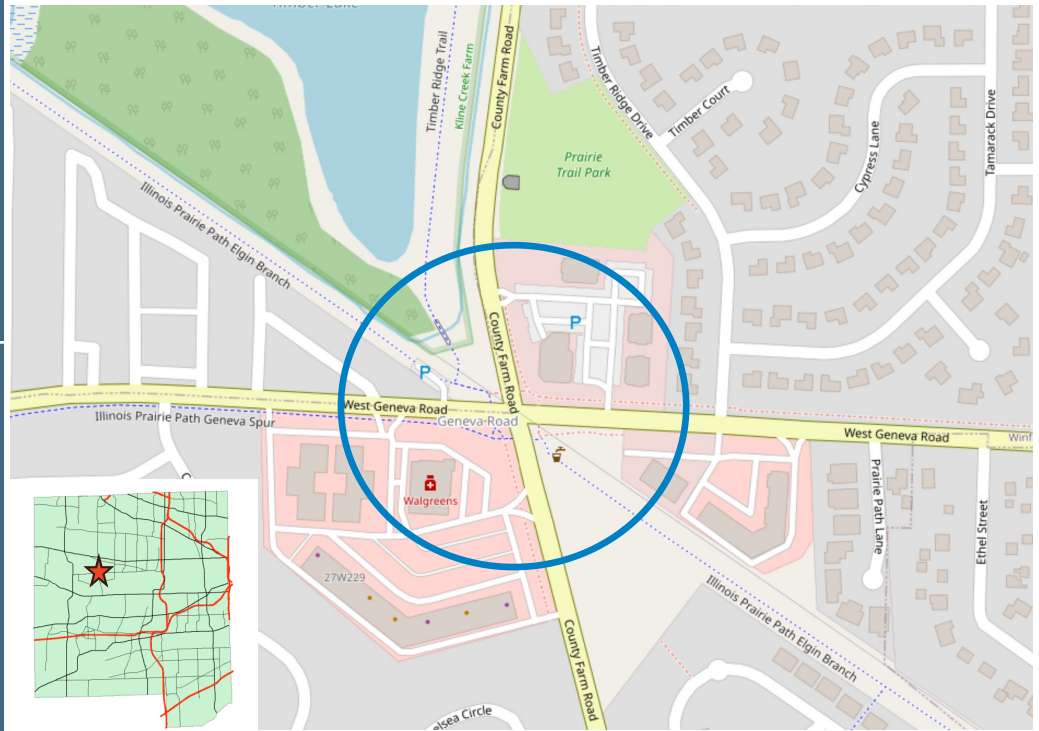
### COST ESTIMATE

\$3,250,000 including engineering and construction

### DISTRICTS REPRESENTED

US Senate—Illinois  
US Representative District 3  
IL Senate District 24  
IL Representative District 47  
County Board District 6

## COUNTY FARM ROAD AT GENEVA ROAD INTERSECTION: CHANNELIZATION AND SAFETY IMPROVEMENTS



## PROJECT INFORMATION

This project involves the junction of two county highways and the Illinois Prairie Path Elgin Branch Trail. The intersection in question is listed as one of the high accident locations in DuPage County with more than 80 crashes, including 3 involving pedestrians and bicyclists over the past 3 years. The intersection experiences a great deal of congestion and handles almost 43,000 vehicles and trucks per day. In addition, recent counts show an average of over 1200 bike and pedestrian crossings on a typical summer day.

DuPage County Division of Transportation is seeking funding to design and construct a safer intersection for all users. The project will involve the addition of turn lanes and include traffic signal improvements for

pedestrians and bicyclists to reduce conflicts between motorized and non-motorized users. The improvement will also accommodate emergency response to nearby Central DuPage Hospital.

Estimated project cost—including engineering—for the intersection improvements is currently valued at more than \$3.25 million.

Phase I engineering is currently underway and DuPage County anticipates completing the Phase I report in 2026 and progressing to design engineering and land acquisition in 2026 and 2027. The County hopes to construct the improvements in late 2027 and early 2028.



# STEARNS ROAD MULTIUSE PATH - WEST COUNTY LINE TO SAYER ROAD

## PROJECT DETAILS

### LOCATION

Unincorporated DuPage County and Village of Bartlett

### ISSUE

Insufficient pedestrian accommodations

### SOLUTION

Construct a multiuse path for safe pedestrian and bicycle inter-county and state park access

### BENEFIT

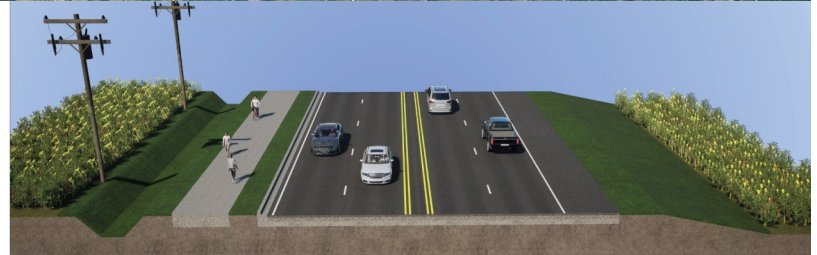
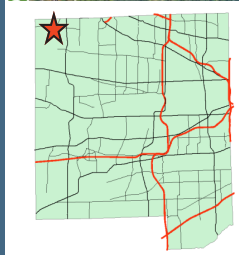
Eliminates need for people to walk or bike in street

### COST ESTIMATE

\$4,500,000 including engineering and construction

### DISTRICTS REPRESENTED

- US Senate—Illinois
- US Representative District 3
- IL Senate District 25
- IL Representative District 49
- County Board District 6



## PROJECT INFORMATION

This project stems from the County’s Long Range Transportation Plan and public demand for north DuPage and inter-county non-motorized facilities. The Stearns Road (County highway 29) corridor is designated as a Strategic Regional Arterial, and is a high speed facility linking multi-modal rail facilities and large warehousing complexes north of Stearns Road. The highway speed limit is posted at 45-50 mph and carries approximately 18,000 vehicles per day. Bicycles and pedestrians use the shoulders of the road presently to traverse the corridor. The proposed path will connect to Kane County and existing path systems in DuPage. The proposed facility is a 10 foot asphalt path constructed in the

right of way along one side of Stearns Road. Pedestrian accommodations are anticipated at the CN Rail crossing and at key intersections. Due to the presence of wetlands and utilities, the path design will be carefully screened and aligned to avoid impacts and unnecessary costs.

Phase I engineering is currently underway and DuPage County anticipates selecting a preferred alignment in early 2026 and progressing to design engineering and land acquisition in 2026 and 2027. The County hopes to construct the facility in late 2027 and early 2028.



# THE COUNTY OF DUPAGE

## FLOOD CONTROL

Nelson's Highview (Newton and Second).....	8
Stratford Green Flood Reduction Project.....	9
Countywide Flood-Prone Property Buyouts .....	10

*a great place to live, work and raise a family*

# NELSON'S HIGHVIEW (NEWTON & SECOND)



## PROJECT DETAILS

### LOCATION

Unincorporated Glendale Heights  
Milton Township

### ISSUE

Multiple properties and roadways experience significant flooding during storm events

### SOLUTION

Expansion of detention in the area and storm sewer improvements

### BENEFIT

The reduction and elimination of flooding for 20+ properties

### COST ESTIMATE

\$300,000

### DISTRICTS REPRESENTED

US Senate - Illinois

US Representative District 3

IL Senate District 23

IL Representative District 46

County Board District 4



## PROJECT HISTORY & INFORMATION

The Nelson's Highview neighborhood in Unincorporated Glendale Heights has an existing storm sewer system and vacant land to control flooding. However, during medium to large storm events, the existing system cannot handle the flows. The excess stormwater causes damage to numerous residential properties and creates road closures, which potentially limits emergency vehicle access.

The solution includes excavating a local detention/retention pond, installing storm sewer to transport floodwater to the pond

and outlet improvements and downstream main lines. In addition, native wetland enhancements and the installation of best management practices could be incorporated to improve natural habitat.

# STRATFORD GREEN FLOOD REDUCTION PROJECT



## PROJECT DETAILS

### LOCATION

Unincorporated Willowbrook

### ISSUE

The local community is inundated with flood water in rainfall events limiting access to homes by property owners and emergency vehicles.

### SOLUTION

Expansion of detention pond, modification to overland flow path and storm sewer improvements

### BENEFIT

Reduce flooding to allow for safe access to homes and roadways.

### COST ESTIMATE

\$350,000

### DISTRICTS REPRESENTED

US Senate - Illinois

US Representative District 6

IL Senate District 41

IL Representative District 82

County Board District 3



## PROJECT HISTORY & INFORMATION

The Stratford Green Condominium Complex in Unincorporated Willowbrook has been experiencing flooding during large storm events for many years. This multi unit property accepts stormwater runoff from nearly 347 acres offsite including nearby properties and I-55. The existing on site detention basin cannot handle the flows, causing widespread flooding throughout the complex. The floodwaters threaten the residential dwellings and flood the parking lot, limiting

access for emergency vehicles and preventing ingress/egress for residents.

Proposed improvements include modification to the emergency overflow route of discharge from the existing basin, creation of new flood water storage, and upgrades to the existing storm sewer including installation of backflow preventers (check valves).



# COUNTYWIDE FLOOD-PRONE PROPERTY BUYOUTS

## PROJECT DETAILS

### LOCATION

Countywide

### ISSUE

Severe Riverine Flooding  
Severe Flood Loss

### SOLUTION

Acquisition of flood-prone properties

### BENEFIT

Annual removal of 2-3 flood-prone properties from high flood risk areas

### COST ESTIMATE

\$500,000-\$1,000,000

### POLITICAL DISTRICTS

US Representative Districts:

3, 4, 6, 8, & 11

IL Senate Districts:

4, 21, 23, 24, 25, 28, 33,  
39, 41, 42, & 43

IL Representative Districts:

7, 41, 42, 45, 46, 47, 48, 49,  
50, 56, 65, 77, 81, 82, 84, &  
85

County Board Districts:

1, 2, 3, 4, 5 & 6



## PROJECT HISTORY & INFORMATION

DuPage County is requesting funding for the acquisition of five flood-prone residential properties countywide annually. The County has an ongoing list of more than 200 properties eligible for voluntary buyout. In addition, FEMA has listed several repetitive loss properties throughout the County. Located in each of the County's main watersheds, the properties consist of single-family homes located within the floodway or floodplain. These properties have past flood history of at least one foot in a single flood or at least a half of a foot in two or more floods. Following acquisition, the projects include demolition and removal of all structures on the properties to return them to open

space for green space enhancements. The County may also install native plantings to improve water quality. The County assumes all maintenance responsibility of these properties as well.



# THE COUNTY OF DUPAGE

## WATER & SEWER

Glen Ellyn Water System Update .....	12
Nordic Hills Water Conversion Study.....	13
Sanitary Sewer Collection System Upgrades .....	14
Public Works and Stormwater Maintenance Building Expansion .. .....	15

*a great place to live, work and raise a family*



# GLEN ELLYN WATER SYSTEM UPGRADE

## WATER SERVICE EXPANSION

### PROJECT DETAILS

#### LOCATION

Unincorporated Glen Ellyn /  
Lombard Milton Township

#### ISSUE

Vulnerable drinking water  
system without redundancy  
and poor water quality.

#### SOLUTION

Loop the existing system to  
provide water to new residents,  
improve fire flow, water quality  
and create redundancy

#### BENEFIT

Provide reliable drinking water  
service and fire flow to residents in  
unincorporated DuPage County

#### COST ESTIMATE

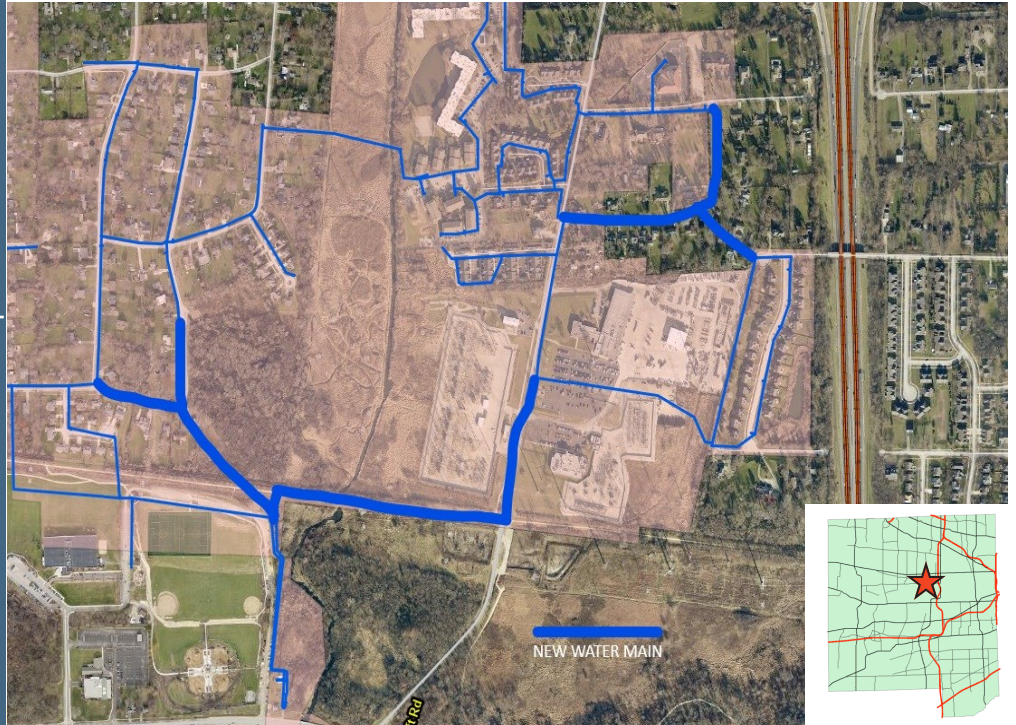
\$1,500,000—\$3,000,000

US Representative District 3

IL Senate District 23

IL Representative District 46

County Board District 4



### PROJECT HISTORY & INFORMATION

DuPage County owns and operates the Glen Ellyn Heights water system in unincorporated Glen Ellyn. The Eastern area of the system has recently been expanded to include a subdivision in the vicinity of North Avenue & Bloomingdale Road in DuPage County. The area also has hundreds of properties including multi family residential, commercial and multiple religious institutions.

To continue to provide reliable fire flows, service redundancy &

quality drinking water to the area, DuPage County requires modeling of the system. Modeling will identify necessary loops and new transmission lines needed to supply the area.

Completion of this project would provide redundant feed lines increasing fire flow and improving water quality to this critical area. In addition, the new water lines would make quality drinking water available to several homes currently on private well water.



# NORDIC HILLS WATER CONVERSION STUDY

## PROJECT DETAILS

### LOCATION

Unincorporated Itasca  
Addison Township

### ISSUE

Unincorporated subdivision  
currently on well water with  
poor fire flow

### SOLUTION

Upgrade piping size for  
adequate fire flows and water  
quality

### BENEFIT

Better water quality and fire  
protection

### COST ESTIMATE

Capacity Study—\$250,000  
Conversion to Lake Michigan  
\$2,000,000 - \$3,500,000

US Representative District 8

IL Senate District 24

IL Representative District 48

County Board District 1



## PROJECT HISTORY & INFORMATION

DuPage County owns and operates the Nordic Hills drinking water system. The system provides treated well water to unincorporated residents in the vicinity of IL Route 53 & Lake Street. The County took ownership of the system in the early 1990's. The system was originally constructed in the 1950's using 4" and 6" water main. The majority of the system does not support adequate flow rates for firefighting. The system needs to be modeled and new larger transmission lines installed

throughout the subdivision to provide improved water quality and fire protection. This study would include recommendations on looping the water distribution system for water quality along with understanding required capacity issues for fire protection.

Completion of this project will allow for the most efficient design to address water quality, fire protection and area coverage to include the most properties along with any future potential expansion for the area.



# SANITARY SEWER COLLECTION SYSTEM UPGRADES

## PROJECT DETAILS

### LOCATION

Various service areas

### ISSUE

Aging sanitary sewer pipe undersized for current and future build out

### SOLUTION

Upsizing collection system in key areas to provide continuous service to multiple municipalities

### BENEFIT

Upsized pipes to provide better flow to the treatment plants and reduce potential back-ups into houses and businesses

### COST ESTIMATE

\$550,000—\$2,000,000 can be constructed in various locations and project size

US Representative Districts:  
6 & 11

IL Senate Districts:  
21 & 41

IL Representative Districts:  
42, 81, & 82

County Board Districts: 3 & 5



## PROJECT HISTORY & INFORMATION

DuPage County Public Works is responsible for approximately 240 miles of sanitary sewer pipe throughout DuPage County providing service to over 60,000 residents. About 70% of the pipe in the collection system is between 40-50 years old and was constructed when population estimates were smaller. As development and redevelopment has continued throughout DuPage County the existing system has shown choke points that need to be addressed with the most likely solution being upsizing of the collection system. Through continued maintenance and rehabilitation of the

existing system Public Works has increased the efficiency and reliability of the overall system. Projects in the area of Maple Avenue near Benedictine University that would provide increased capacity for the redevelopment that has occurred, eliminating surcharges during heavy rain events to convey flows to the Woodridge WWTP. The Nantucket Drive project would provide increased capacity in a secondary interceptor line to reduce the occurrence of any backups or sanitary sewer system overflows during significant rain events. Each project can be completed independently.

# PUBLIC WORKS & STORMWATER MAINTENANCE BUILDING EXPANSION



## PROJECT DETAILS

### LOCATION

Unincorporated Darien

### ISSUE

Provide a staging and dispatch center for water, sewer and flooding located on southeastern area of the County.

### SOLUTION

Construct a 23,000 square foot staging center to optimize response time.

### BENEFIT

Provide a staging and dispatch center for critical Public Works and Stormwater emergency response.

### COST ESTIMATE

\$6,200,000

### DISTRICTS REPRESENTED

US Representative Districts:  
3, 4, 6, 8, & 11

IL Senate Districts:

4, 21, 23, 24, 25, 28, 33, 39, 41, 42 & 43

IL Representative Districts:

7, 41, 42, 45, 46, 47, 48, 49, 50, 56, 65, 77, 81, 82, 84 & 85

County Board Districts:

1, 2, 3, 4, 5 & 6



## PROJECT HISTORY & INFORMATION

Water emergencies like flash flooding, watermain breaks, sewer backups, or contaminated runoff can quickly put people and the environment at risk.

Rapid response helps prevent drinking water contamination, flooding,

evacuates residents from danger zones, and reduces exposure to contaminated or standing water. Improving response time for emergencies involving water are significantly improved by constructing a staging and dispatch facility in southeast DuPage County. 24/7 rapid response will limit property damage, protect health, preserve environmental quality, improve agency coordination, and build

long-term community resilience. These benefits justify investments in faster reporting systems, more robust infrastructure, and better emergency planning.

This facility would serve all County residents of DuPage County during flooding, tornado, sewer/water system and other emergencies. This Building would also serve as the point of distribution for DuPage County's Office of Homeland Security & Emergency Management.



# THE COUNTY OF DUPAGE ENVIRONMENTAL

County Campus Food Scrap Composting .....17

*a great place to live, work and raise a family*



# COUNTY CAMPUS FOOD SCRAP COMPOSTING — WHEATON, IL

## PROJECT DETAILS

### LOCATION

City of Wheaton

### ISSUE

County Campus cafeterias and jail generate food scraps that generate GHG emissions when landfilled.

### SOLUTION

Collect food scraps and compost in an aerobic digester.

### BENEFIT

Composted food scraps reduce GHG emissions from food waste & creates an eco-friendly soil amendment.

### POLITICAL DISTRICTS

US Senate - Illinois

US Representative District 3

IL Senate District 24

IL Representative District 47

County Board District 4



## PROJECT HISTORY & INFORMATION

DuPage County has three cafeterias operated by the Care Center's Dining Services. Food is prepped and distributed to patients in the Care Center and then sold to employees and the public in cafeterias in the JTK Administration Building and the Judicial Office Facility. Food is also prepped in the jail for inmates.

Due to these activities, the County generates more than 400 lbs. of food waste on a daily basis.

The U.S. EPA has prioritized the composting of food as a method to reduce greenhouse gas

emissions in the U.S. The EPA estimates that each year U.S. food loss and waste embodies 170 million metric tons of GHG emissions. This waste could be converted into soil amendment that could capture carbon.

Research has found that methane emissions from food waste in landfills far exceed emissions generated from composting.

A composting program could reduce the County's emissions more than 47.45 tons of CO<sub>2</sub>eq annually.

- Current estimate for program: **\$180,000**



# THE COUNTY OF DUPAGE

## COUNTY INFRASTRUCTURE

Animal Services Projects.....	19
DuPage County Care Center Projects.....	20
County Jail Solar Array and Window Replacements .....	21
Sheriff's Work Alternative Program Building .....	22

*a great place to live, work and raise a family*



## PROJECT DETAILS

### LOCATION

Animal Services shelter  
Wheaton, IL

### ISSUE

Current expansion project  
opportunities

### SOLUTION

Additional project items that  
would support and enhance  
the Animal Services shelter

### BENEFIT

New shelter that mirrors  
growing trend toward  
humane, fear-free animal  
shelter/community center

### DISTRICTS REPRESENTED

US Representative Districts:  
3, 4, 6, 8, & 11

IL Senate Districts:  
4, 21, 23, 24, 25, 28, 33,  
39, 41, 42, & 43

IL Representative Districts:  
7, 41, 42, 45, 46, 47, 48,  
49, 50, 56, 65, 77, 81,  
82, 84, & 85

County Board Districts:  
1, 2, 3, 4, 5, & 6

## ANIMAL SERVICES — ADDITION OPPORTUNITIES



DuPage County  
**ANIMAL SERVICES**  
Saving Animals. Serving People.



## PROJECT HISTORY & INFORMATION

DuPage County Animal Services is a self-funded immediate open admission animal shelter caring for more than 2,300 animals annually of all species. Originally built in 1978, it has recently expanded to address critical animal population and community program needs.

Items not included in the original expansion project scope but could be addressed with additional funding:

### Solar [Photovoltaic] Panel Additions

- Existing roof was replaced during current construction project, and with new 'flat roofs' facility is ready to host PV panels
- New expansion electrical

system and room has been designed to accommodate future PV panels

- Current estimate for roof PV system: **\$240,000-\$275,000**

### Bird Strike Protection for Facility Windows

- Large picture windows and higher lobby glass areas at risk for bird strikes during heavy migration periods
- Applied window films are showing success in reducing bird injuries and kills
- Current estimate for installation of new bird strike protection: **\$25,000-\$35,000**



## PROJECT DETAILS

### LOCATION

DuPage Care Center  
Wheaton, IL

### ISSUE

Additional project opportunities

### SOLUTION

Additional project items that would support and enhance the Care Center

### BENEFIT

Improved electrical systems and back-up capabilities

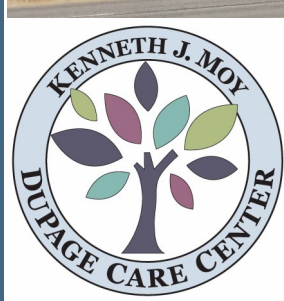
### DISTRICTS REPRESENTED

US Representative Districts  
3, 4, 6, 8, & 11

IL Senate Districts  
4, 21, 23, 24, 25, 28, 33,  
39, 41, 42, & 43

IL Representative Districts  
7, 41, 42, 45, 46, 47, 48,  
49, 50, 56, 65, 77, 81,  
82, 84, & 85

County Board Districts  
1, 2, 3, 4, 5, & 6



## PROJECT HISTORY & INFORMATION

The DuPage Care Center serves a primarily indigent population with up to 80% of residents relying on Medicaid to pay for their care. The Care Center is currently undergoing extensive renovations that will greatly improve the quality of life for our 224 elderly and/or disabled residents.

*North* would be provided its own standalone generator and associated switchgear

- *Care Center East* building generator and switchgear are in need of replacement as well
- Current estimate for generators and associated work: **\$2,500,000**

Items not included in the original renovation project scope but could be addressed with additional funding:

### Back-up Generator and Switchgear Replacements

- *Care Center North* building currently shares a back-up generator with a neighboring building
- Generator is in need of replacement, and *Care Center*

# SOLAR ARRAY AND WINDOW REPLACEMENTS

501 BUILDING



## PROJECT DETAILS

### LOCATION

County Campus  
Wheaton, IL

### ISSUE

Existing building age allows for building envelope improvements

### SOLUTION

Embrace solar opportunity  
Replace windows with new

### BENEFIT

Produce green energy  
Improved building energy efficiency and conditions

### DISTRICTS REPRESENTED

US Representative Districts:  
3, 4, 6, 8, & 11

IL Senate Districts:  
4, 21, 23, 24, 25, 28, 33,  
39, 41, 42, & 43

IL Representative Districts:  
7, 41, 42, 45, 46, 47, 48,  
49, 50, 56, 65, 77, 81,  
82, 84, & 85

County Board Districts:  
1, 2, 3, 4, 5, & 6



## 501 SHERIFF / JAIL BUILDING

Portions of the 501 Sheriff/Jail Building were built in 1981, with the 'tower' addition built in 1990. Original building materials such as roofing and glazing are reaching their expected end-of-life, allowing for the opportunity to add solar and more efficient building envelope options.

### Solar [Photovoltaic] Panel Additions

- Portions of existing roof have been recently replaced and are ideal locations for solar panels
- Design is in progress for new array and required electrical infrastructure
- Current estimate for roof PV system: **\$230,000-\$260,000**

### Operable Skylight over 'B' Building Recreational Area

- Existing skylight [which opens horizontally to allow in fresh air and direct sunlight] is at end of expected lifespan

- Replacement of equipment and tracks along with new glazing structure
- Current estimate for new operable skylight: **\$150,000-\$200,000**

### Replacement of Facility Windows

- The storefront-type glazing [which includes a 'skylight' portion above] is now leaking in several areas. Replacing with new sealed glass [using modern UV and insulation standards] would substantially improve building energy efficiency.
- Current estimate for different phases of window replacements range from **\$1,000,000 each** to approximately **\$6,000,000 for entire building**



## PROJECT DETAILS

### LOCATION

DuPage County Campus  
Wheaton, IL

### ISSUE

Existing building is beyond  
useful life

### SOLUTION

New building to host SWAP  
staff and programming

### BENEFIT

Modernized space to provide  
improved services to  
sentenced offenders utilizing  
the Sheriff's Work Alternative  
Program

### DISTRICTS REPRESENTED

US Representative Districts:  
3, 4, 6, 8, & 11

IL Senate Districts:  
4, 21, 23, 24, 25, 28, 33,  
39, 41, 42, & 43

IL Representative Districts:  
7, 41, 42, 45, 46, 47, 48,  
49, 50, 56, 65, 77, 81,  
82, 84, & 85

County Board Districts:  
1, 2, 3, 4, 5, & 6

## SHERIFF'S WORK ALTERNATIVE PROGRAM BUILDING



## PROGRAM HISTORY & INFORMATION

The DuPage County Sheriff's Work Alternative Program [SWAP] was established in 1995 as a viable alternative to incarceration, due to overcrowding at the DuPage County Jail. Offenders sentenced to SWAP have worked in every municipality in the county performing various projects at no cost to taxpayers.

The program averages 40 offenders a day who are split into three or four work crews that are transported to work sites by marked Sheriff's Office vans and supervised by specially trained uniformed deputies.

Ninety-five percent of the offenders sentenced to SWAP complete the program, a rate much higher than other community service programs. For this reason the Illinois Criminal Justice Authority has previously called SWAP "the most innovative [alternative incarceration] program to ever come along in Illinois."

### New/ Relocated SWAP Building Information

- Existing 3,700 SF building housing the SWAP program is a former service station over 65 years old, and its current conditions are inadequate.
- A new facility or relocation to other available space on campus for the SWAP program would provide a safer, better equipped space for staff and program participants.
- Better facilities for municipal vehicle maintenance and washing as provided by the program.
- Current estimate for relocation or a new building for SWAP: **\$1,750,000-\$2,250,000**